



WOOK IL MACHINERY



Head Office / Factory #29 SungjuNongGongdangi-gil, SungjuGun, KyongBuk 40033, Korea
Tel. + 82-54-931-6162 **Fax.** +82-54-931-6106

Seoul Office Siheungjutong Center 25Dong, Siheungdaero 97, GeumCheongu, Seoul 08639,
Tel. +82-2-896-1285 **Fax.** +82-2-892-0445

Busan Office #301 Injero 39bungil 58-4 3F, Kimhae, KyongNam 50929, Korea
Tel. +82-55-336-1221 **Fax.** +82-55-336-1222



WOOK IL
MACHINERY CO., LTD



CONTENTS

1. Company Information
2. Company History
3. Organization
4. Company Mumbers
5. Production Site
6. Equipment Status
7. Overseas Export
8. Certificate Status
9. Product Specification

The first developer of semi-automatic die-cutter in the world

Since 1983, we, Wookil Machinery Co., Ltd, have been proud of ourselves not only the first developer of semi-auto flatbed die-cutters but also the first manufacturer of the biggest semi-auto flatbed die-cutter(1700 x 2600mm) in the world.

We have concentrated on improving and optimizing our product lines as well as sales and service network for the customer's high demands and fast growing corrugated industry in the domestic and international market.

During four decades, we, Wookil Machinery Co., Ltd, have developed the completed product lines with accumulated technology and innovated design and the customer's constant support in domestic and the world.

At the moment, we are improving and enhancing our existing die-cutters with combining state-of-the-art IT technology to support corrugated industrial automation as well as are developing new product lines to catch-up the changing market demands.

We believe that "Constant Change & Development" with innovative technology will bring the name of the global leader of die-cutter in the markets and "Consistent and Devoted customer's interest will make us change in the competitive markets.

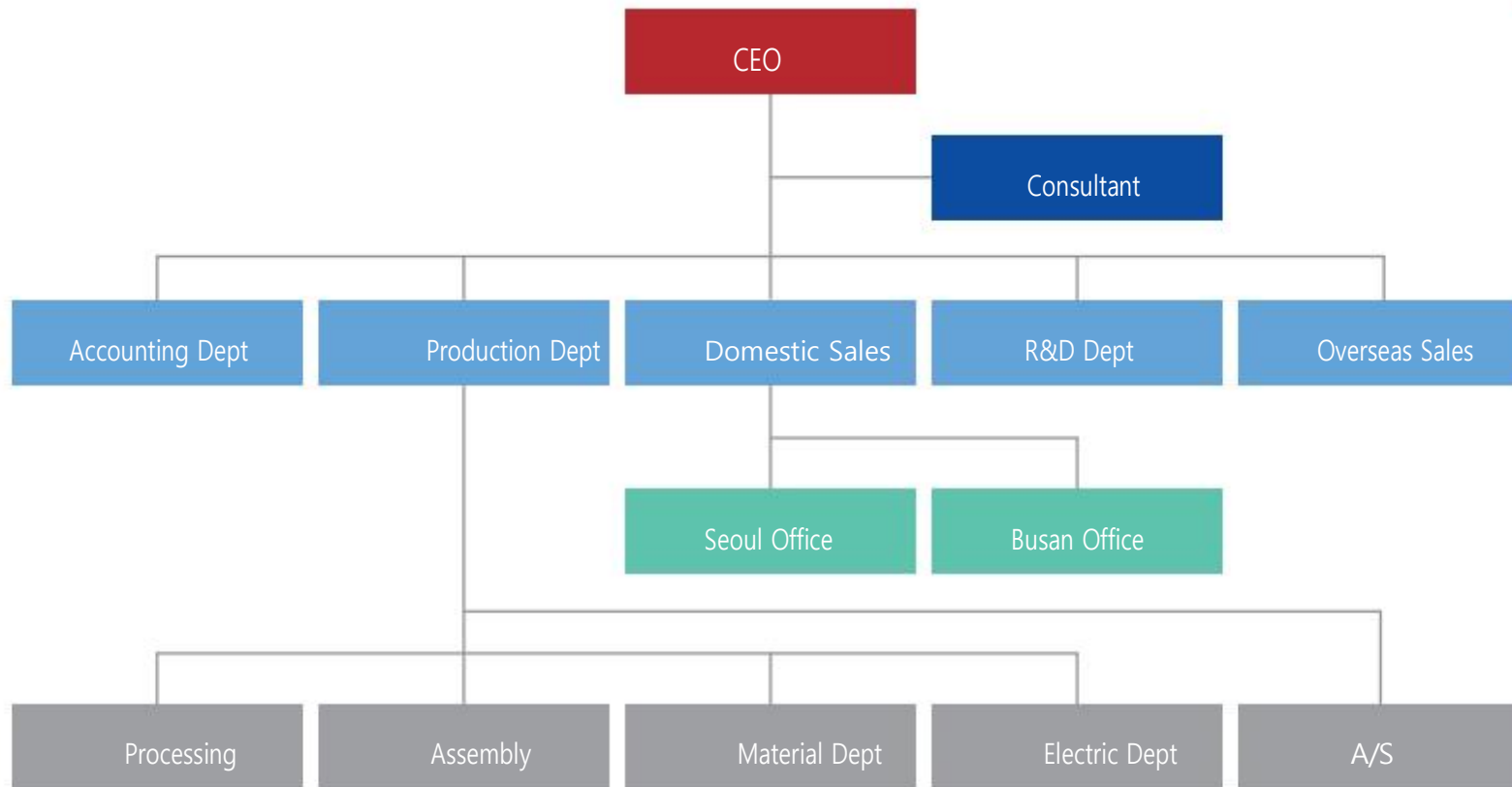


OUR HISTORY OF **WOOKIL MEMORIES**

- 1983 05 Established WOOKIL Machinery Private company
- 05 Developed Semi-automatic die-cutter
- 1996 01 Established WOOKIL Machinery Co., Ltd Coporation Company
- 1998 09 Acquired "S" certificate, as Korea Safety Standard from KOSHA
- 09 Acquired "CE" Certificate from TUV for Europe Export
- 1999 11 Exporting Semi-automatic die-cutter in Trukey, Germany and Finland
- 1999 12 Moved Head Office & Factory to Deagu Seong Seo Industrial Complex
- 2001 05 Exporting Semi-automatic die-cutter in Germany, UK and Swiss
- 2002 03 Developed Automatic die-cutters
- 09 Moved Head Office & Factory to SungjuNongkongdanji
- 11 Award of Year of Top Exporter
- 2006 01 Developed Automatic Die-cutter for Paper & Carton Board
- 06 Acquired "ISO 9001" Certificate
- 06 Established R&D Dept
- 12 Exported \$4m in 2006
- 2007 05 Exporting Semi-automatic die-cutter in Ukraine, Poland & Japan
- 2008 01 Exproting Automatic 1700 x 2500 SF to Gernany
- 2012 07 Developed New Automatic Die-cutter with 8 grippers
- 2014 06 Exporting Automatic die-cutter in Poland, Germany & USA
- 2016 03 Exporting Semi-automaitc diecutter with Heater to Peru
- 2017 04 Developed New Heater Type
- 2018 03 Produced 792 machines for Local & 155 machines for Export
- 2019 10 Nominated K-Appsis Developer from government



WOOKIL ORGANIZATION





WOOKIL MEMBERS

Total : 27

	Consultant	Manage	Sales Dept			A/S	
Dept	Consultant	Manager	Seoul Office	Busan Office	Overseas	Seoul	Head Office
Person	1	2	1	1	1	2	3

	Production Dept						
Dept	Processing	Assembly	Material	Welding	Electric	Design	Consultant
Person	2	5	2	2	2	2	1

PRODUCTION SITE

We are always doing our best to deliver the highest quality products with superior know-how and technology.



Head Office



교육장

PRODUCTION SITE

We are always doing our best to deliver the highest quality products with superior know-how and technology.



Material Office



Electric Office

PRODUCTION SITE

We are always doing our best to deliver the highest quality products with superior know-how and technology.



R & D Dept



Drawings

PRODUCTION SITE

We are always doing our best to deliver the highest quality products with superior know-how and technology.



Factory



Parts

PRODUCTION SITE

We are always doing our best to deliver the highest quality products with superior know-how and technology.



Welding



Processing

Equipment Status

We'll return the best technology, the best satisfaction and the best quality to our customers.



No	Equipment	Model	Qt'y	Etc
1	Lathe	NSL580 x 1500 G	1 EA	
2	Multi Milling	280 x 1100 MM	2 EA	
3	Vertical Milling	280 x 1100 MM	1 EA	
4	Radial	SRD - 1500	1 EA	
5	Radial	SRD - 3000	1 EA	
6	Boring Machine	대우 D 150	1 EA	
7	Drilling Machine		5 EA	
8	Welding	Co2	3 EA	
9	Hoist	5 TON	3 EA	
10	Hoist	7.5 TON	2 EA	
11	Hoist	10 TON	1 EA	
12	Gantry Crane	30 TON	1 EA	

Overseas Export

Wookil exported a first die-cutter to Germany in 1997 and have been exporting more than 160 machines in 50 countries since 1997.

- | | |
|-------------------------|------------------------------|
| A. Thailand | S. Poland |
| B. Malaysia | T. Slovenia |
| C. Indonesia | U. Russia |
| D. Turkey | W. Bangladesh |
| E. Hong Kong / China | X. Tunisia |
| F. Germany | Z. Hungary |
| G. Holland(Netherlands) | AA. Lithuania |
| H. Belgium | BB. Vietnam |
| I. Finland | CC. Republic of Croatia |
| J. Bulgaria | DD. USA |
| K. United Kingdom | FF. Grece |
| L. Bulgaria | GG. Mexico |
| M. Japan | HH. Guatemala |
| N. France | II. Honduras |
| O. Philippines | JJ. Ecuador |
| P. Egypt | KK. Republic of South Africa |
| Q. Ukraine | LL. Australia |
| R. Spain | MM. Canada |



Certificate Status



Management Innovation Certificate



R&D Dept Certificate



"S MARK" Certificate



"ISO 9001" Certificate



"CE" Safety Certificate, SGS



"CE" Safety Certificate, TÜV



Certificate of Excellent Technology



Platen Cutting System Patent



Semi-Automatic
Flatbed Die-Cutter

WTNS-S1700K



The Detailed Specifications / Standard Type

Specs	Model	WTNS-1300K	WTNS-S1300K	WTNS-1500K	WTNS-S1500K	WTNS-1700K	WTNS-S1700K	WTNS-1900K	WTNS-S1900K	WTNS-2100K	WTNS-S2100K	WTNS-2500K	WTNS-S2500K
Max. Sheet Size		1,000 x 1,300mm		1,100 x 1,500mm		1,200 x 1,700mm		1,300 x 1,900mm		1,500 x 2,100mm		1,700 x 2,500mm	
Min, Sheet Size		500 x 650mm		550 x 750mm		600 x 850mm		650 x 950mm		750 x 1,050mm		850 x 1,500mm	
Max, Cutting Size		980 x 1,280mm		1,080 x 1,480mm		1,180 x 1,680mm		1,280 x 1,880mm		1,480 x 2,080mm		1,680 x 2,480mm	
Cutting Pressure		300 Tons		350 Tons		400 Tons		450 Tons		500 Tons		550 Tons	
Max, Speed		4,200 S/H		4,000 S/H		3,800 S/H		2,700 S/H		2,100 S/H		1,800 S/H	
Sheet Thickness		1 ~ 10mm, Corrugated Board, A, B, AB, E-Flute (15mm special request)											
Electrical Power		9.2 Kw	11 Kw	9.2 Kw	14 Kw	13 Kw	18 Kw	19 Kw	24 Kw	22 Kw	29 Kw	35 Kw	

Semi-Automatic Flatbed Die-Cutter Series



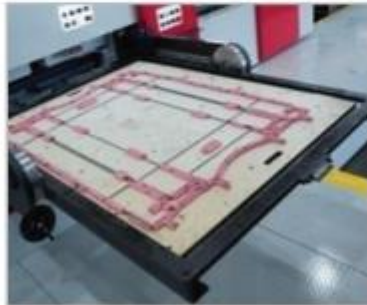
Control Panel

- Possible to check all Errors.
- User-Friendly Button & Switched Location
- Possible to change Touch Screen(Optional)



Feeding

- Precise Feeding by Front & Side Lay
- Easy Feeding for wrapped & twisted Paper
- Easy to feed at High Speed
- Possible Kiss Cutting
- 2 Monitors to check Sheet Flow
- Possible to add Retractable Feeder(Optional)



Die-Cutting

- Easy to change cutting-die
- Easy Chase Order Change
- Index Drive by Sankyo
- Center Line System for Quick Set-Up
- Air Ball System for Cutting Plate In & Out easily.
- Cutting Pressure from 300 up to 500 according to Machine Size



Stripping

- Center Line System for Quick Set-Up
- Electric Clamp for Male Stripping Board
- Triple Action Stripping: Male, Female & Bottom Pins
- Scrap Conveyour



Delivery

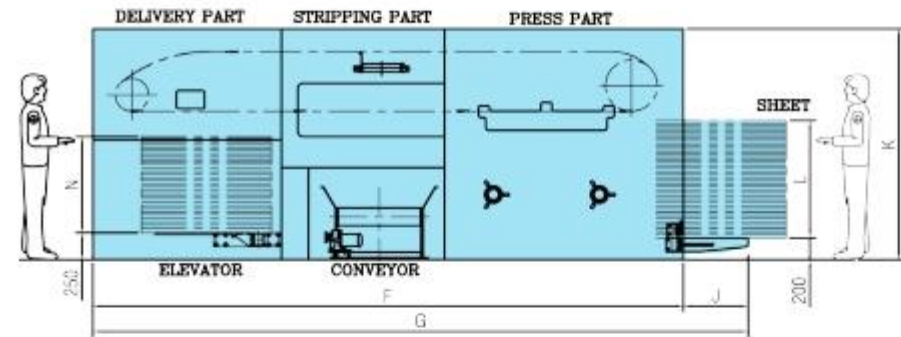
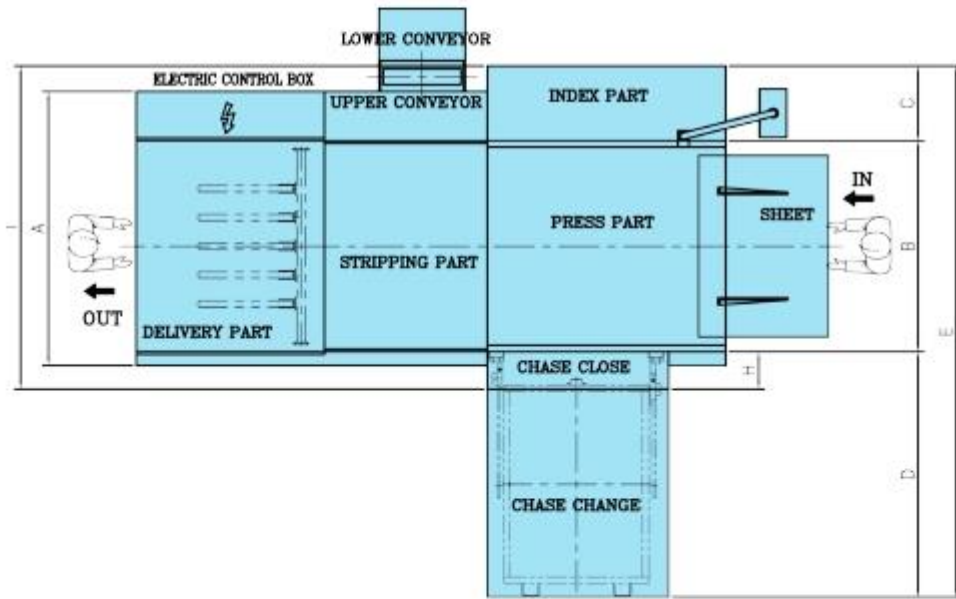
- High Pile Delivery System(Standard)
- Tab Inserter for Counting
- Sides & Front Jogger ensure Precise Stacking
- Other Type of Delivery System Available



Grip Edge Removal Unit

- Possible 4 sides Stripping
- Save Labor Cost
- Increase Productivity

WTNS-S Type Lay-Out

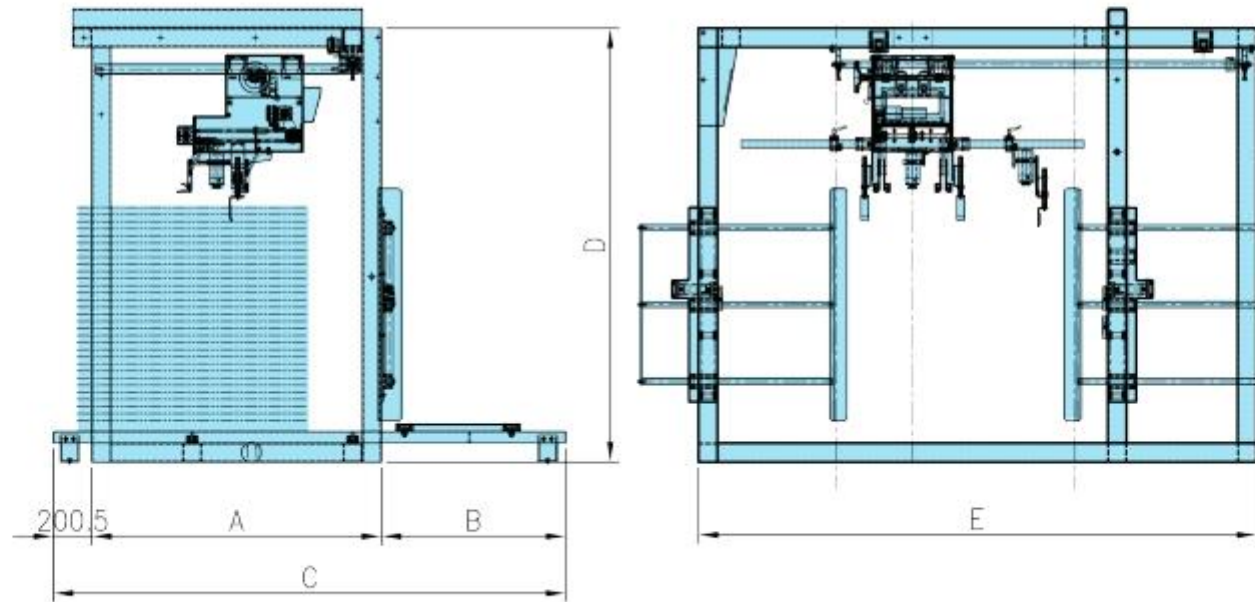


	A	B	C	D	E	F	G	H	I	J	K	L	N
WTNS-S1300K	2,170	1,580	700	1,845	4,125	4,820	5,420	350	2,630	600	2,100	2,100	2,100
WTNS-S1500K	2,370	1,780	700	2,025	4,505	5,090	5,690	350	2,830	600	2,070	2,070	2,070
WTNS-S1700K	2,570	1,980	700	2,300	4,980	5,450	6,050	350	3,030	600	2,160	2,160	2,160
WTNS-S1900K	2,832	2,220	770	2,600	5,570	5,910	6,790	430	3,420	880	2,380	2,380	2,380
WTNS-S2100K	3,052	4,230	850	2,800	6,080	6,775	7,705	480	3,760	930	2,485	2,485	2,485
WTNS-S2500K	3,660	2,970	800	3,280	7,050	8,300	9,445	480	4,310	1,145	2,680	2,680	2,680

TOP-FEEDER



TOP-FEEDER Lay-Out



	WTNS-1300K	WTNS-S1300K	WTNS-1500K	WTNS-S1500K	WTNS-1700K	WTNS-S1700K	WTNS-1800K	WTNS-S1800K	WTNS-1900K	WTNS-S1900K	WTNS-2100K	WTNS-S2100K	WTNS-2500K	WTNS-S2500K
A	1,415	1,415	1,515	1,515	1,515	1,515	1,515	1,515	1,615	1,615	1,815	1,815	2,015	2,015
B	845	845	945	945	945	945	945	945	1,045	1,045	1,145	1,145	1,345	1,345
C	2,480	2,480	2,680	2,680	2,680	2,680	2,680	2,680	2,880	2,880	3,180	3,180	3,580	3,580
D	2,160	2,160	2,260	2,260	2,260	2,260	2,260	2,260	2,360	2,360	2,460	2,460	2,560	2,560
E	2,420	2,420	2,620	2,620	2,920	2,920	2,920	2,920	3,020	1,515	3,220	3,220	3,620	3,620

Automatic
Flatbed Die-Cutter

WTNS-NSSF1700



The Detailed Specifications / Standard Type

Model	WTNS-NSSF1500	WTNS-NSSF1700	WTNS-NSSF1900	WTNS-NSSF2100	WTNS-NSSF2500
Max. Sheet Size	1,100 x 1,500mm	1,200 x 1,700mm	1,300 x 1,900mm	1,500 x 2,100mm	1,700 x 2,500mm
Min, Sheet Size	550 x 750mm	600 x 850mm	650 x 950mm	750 x 1,050mm	850 x 1,250mm
Max, Cutting Size	1,100 x 1,500mm	1,200 x 1,700mm	1,300 x 1,900mm	1,500 x 2,100mm	1,700 x 2,500mm
Cutting Pressure	350 Tons	400 Tons	450 Tons	500 Tons	550 Tons
Max, Speed	6,000 S/H	5,500 S/H	4,500 S/H	4,000 S/H	2,100 S/H
Sheet Thickness	1 ~ 12mm, Corrugated Board, A, B, AB, E-Flute				
Electrical Power	53.4 Kw	55.9 Kw	58 Kw	63.3 Kw	71.4 Kw

Automatic Feeder & Non-stop & Batch System



Feeding

- Lead Edge Feeding with Vacuum Suction for Precise Feeding
- Precise Register by Front & Side Lay
- Motorized Side Guides & Back Stopper
- Pre-Loader(Optional)



Die-cutting

- Easy Chase Order Change
- Index Drive by Sankyo
- Center Line System for Quick Set-Up
- Air Ball System for Cutting Plate In & Out easily.
- Cutting Pressure from 300 up to 500 according to Machine Size



Delivery

- Batch Delivery System(Standard)
- Sides & Front Jogger ensure Precise Stacking
- Other Type of Delivery System Available



Servo Motor

- Control the Sheet Transfer Belt & Feeding Rolls for minimizing Registration Tolerance



Sheet Transfer Belt

- Servo Motor controlled Belt Speed for Precise Feeding
- Slow Down Device at Front Lay controlled by Servo Motor for Precise Registration
- 2 Monitors to check Sheet Flow



Stripping

- Center Line System for Quick Set-Up
- Electric Clamp for Male Stripping Board
- Triple Action Stripping: Male, Female & Bottom Pins
- Scrap Conveyour



Grip Edge Removal Unit

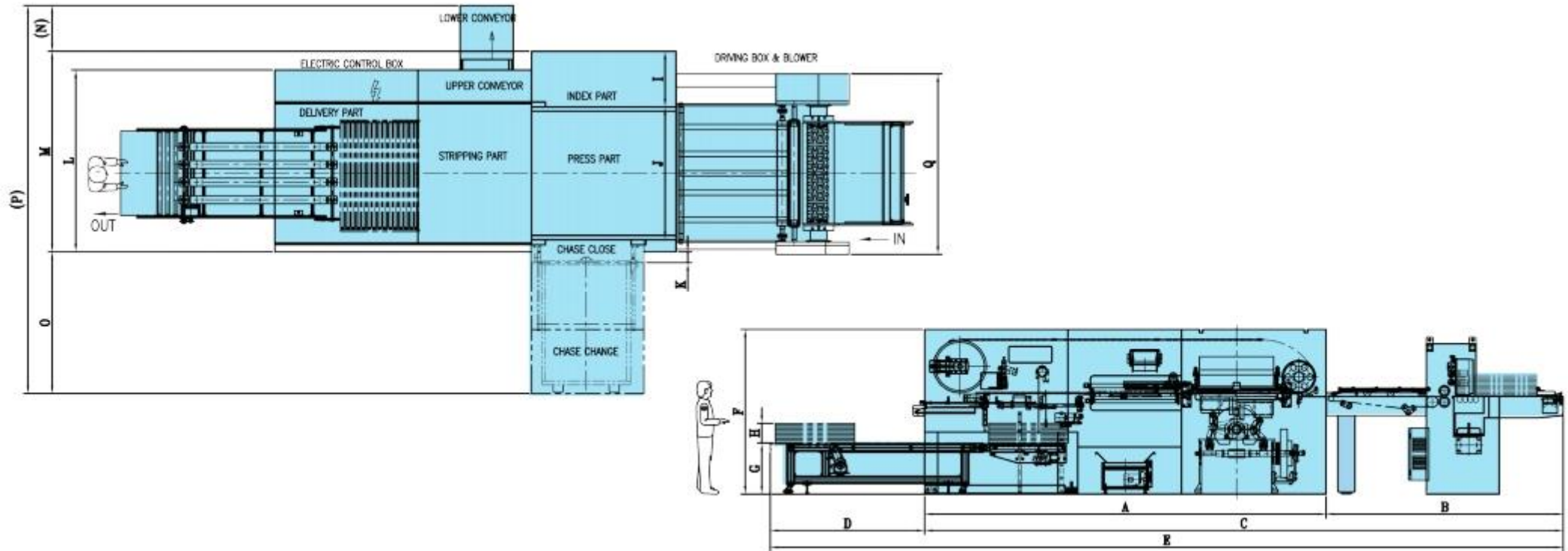
- Possible 4 sides Stripping
- Save Labor Cost
- Increase Productivity



Touch Screen

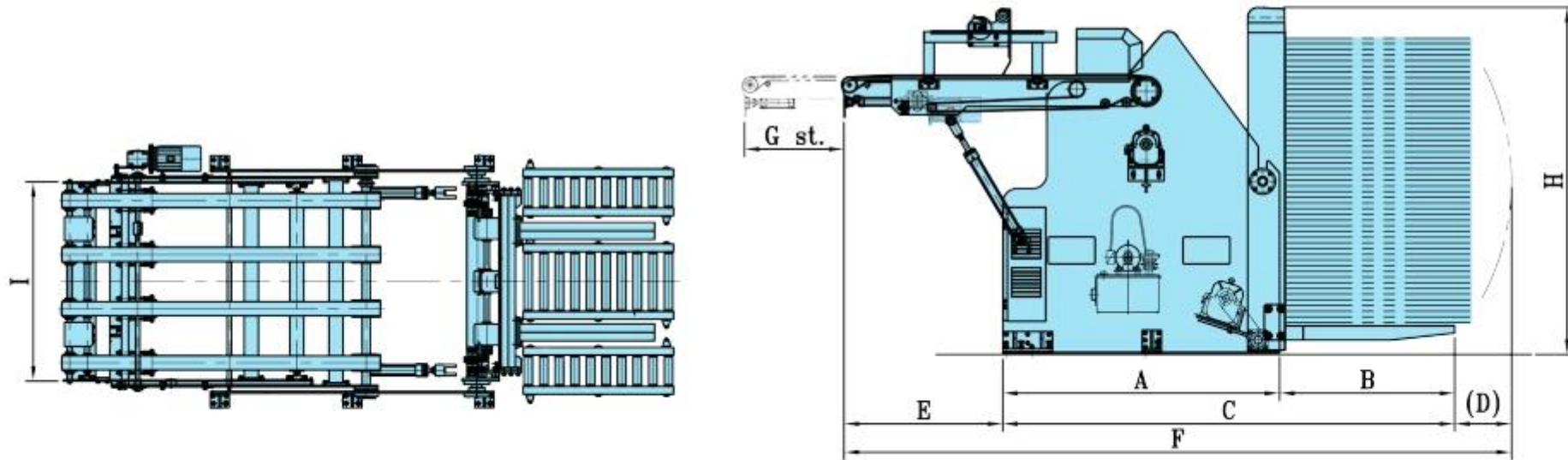
- Possible to check all Errors.
- User-Friendly
- Possible to add "SFMS" to interface with ERP(Optional)

WTNS-NSSF series Lay-Out



	A	B	C	D	E	F	G	H	I	J	K	L	M	N	O	P	Q
WTNS-NSSF1500	5,670	3,344	9,014	2,285	11,299	2,450	723	300	850	2,015	185	2,580	2,865	1,965	695	5,525	2,560
WTNS-NSSF1700	6,055	3,574	9,629	2,326	11,955	2,520	783	300	850	2,215	185	2,780	3,065	2,165	700	5,930	2,760
WTNS-NSSF1900	6,445	3,809	10,254	2,240	12,494	2,610	783	300	900	2,375	275	2,940	3,275	2,430	870	6,575	2,990
WTNS-NSSF2100	7,225	4,573	11,798	2,150	13,948	2,640	780	350	900	2,430	285	3,085	3,460	2,645	900	7,005	3,200
WTNS-NSSF2500	8,155	5,054	13,209	2,165	15,374	2,690	780	450	950	3,160	320	3,800	4,115	2,680	935	7,410	3,690

PRE-LOADER Lay-Out



	A	B	C	D	E	F	G	H	I
WTNS-NSSF1500	1,950	1,233	3,183	400	1,117	4,700	700	2,440	1,400
WTNS-NSSF1700	1,950	1,233	3,183	400	1,117	4,700	700	2,440	1,400
WTNS-NSSF1900	1,950	1,233	3,183	370	1,117	4,670	700	2,490	1,600
WTNS-NSSF2100	1,950	1,233	3,183	370	1,117	4,670	700	2,490	1,800
WTNS-NSSF2500	2,100	1,487	3,183	345	1,640	5,572	870	2,535	2,200

Automatic
Flatbed Die-Cutter

WTNS-1060S



The Detailed Specifications / Standard Type

Specs Model	Max. Sheet Size	Min, Sheet Size	Max, Cutting Size	Operation Pressure	Max, Speed	Sheet Thickness	Electrical Power
WTNS-1060S	1,060 x 750mm	440 x 340mm	1,050 x 740mm	250 Ton	7,200 S/H	Manila: 0.1~1.5mm Corrugated:E,B4mm	19.5 Kw

Automatic Feeder & Non-stop & Batch System



Feeding

- Non-Stop Feeding
- The Feeder is enable to feed thin & thick Paper & E, B Corrugated Board
- Timing Belt Adjustment ensures Precise Sheet Transfer to Front Lay



Feeding Conveyor

- Precise Feeding by Belt Conveyor and Rollers



Die-cutting

- Center Line System for Fast Set-Up
- Chase Turn-Over for Easy Order Change
- Max. Cutting Pressure by Knuckle System
- Fixing Chase by Air Cylinder



Stripping

- Center Line System for Fast Set-Up
- Triple Action Stripping: Male & Female & Bottom Pins



Delivery

- High Pile Delivery System
- Tab Inserter for Counting as Standard
- Side & Front Jogger ensure Perfect Stack



Front Lay Adjustment

- Timing Belt controlled by Front Lay Adjustment for Precise Registration Tolerance



Side Lay Sensor

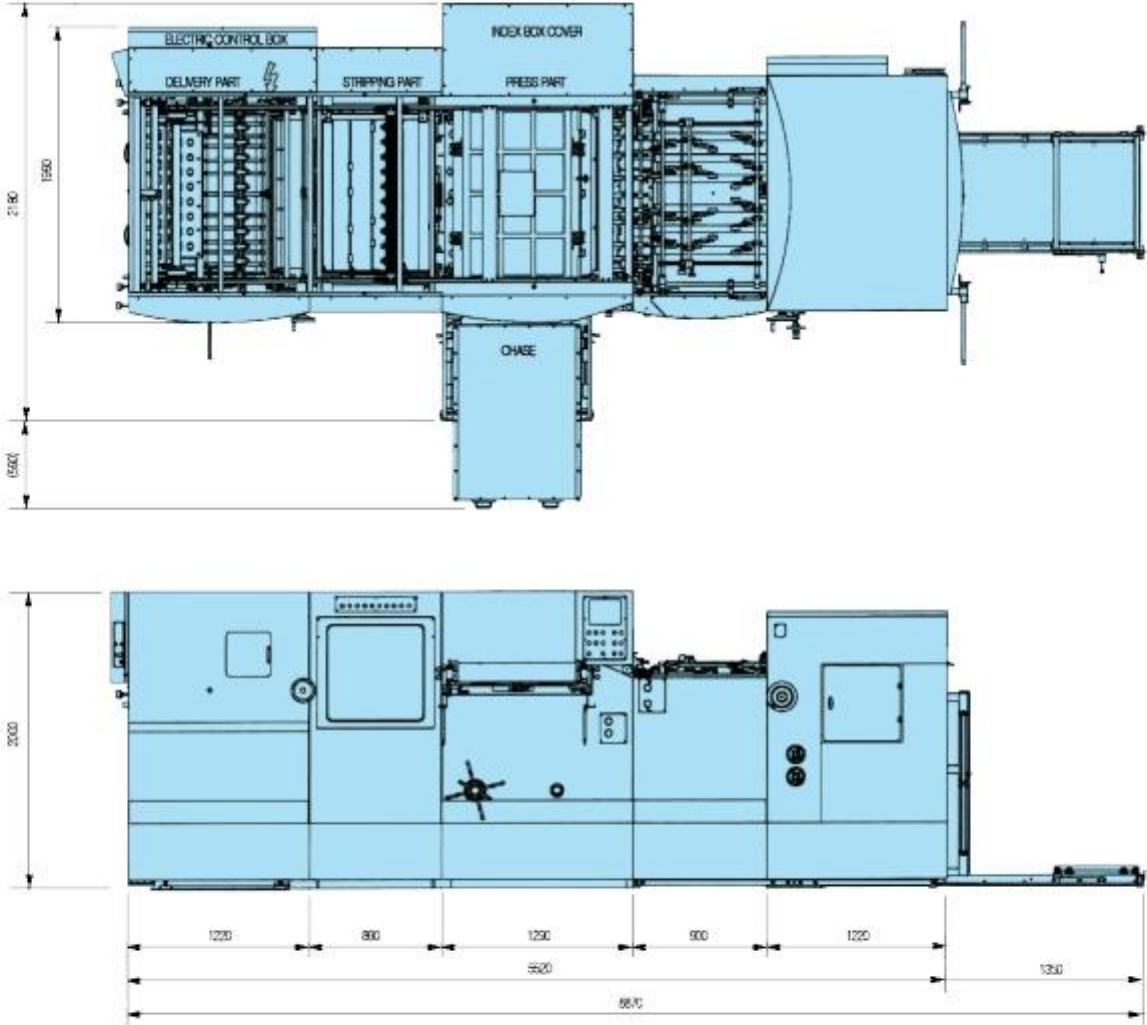
- Easy to Change Side Lay
- Precise Registration by Side Lay Sensor



Touch Screen

- Possible to check all Errors.
- User-Friendly
- Possible to add "SFMS" to interface with ERP(Option)

WTNS-1060S Lay-Out



MEGACUT



모델기본사양 (The Detailed Specifications / Standard Type)

Specs Model	Max. Sheet Size	Max, Cutting Size	Cutting Pressure	Max, Speed	Sheet Thickness	Electrical Power
MEGA-CUT2500	2,550 x 1,730mm	2,500 x 1,700mm	500 Ton	550 S/H	Corrugated upto 10mm Board upto 3mm	26.55 Kw
MEGA-CUT3000	3,100 x 1,900mm	3,000 x 1,800mm	500 Ton	450 S/H	Corrugated upto 10mm Board upto 3mm	39 Kw



Feeding & Delivery

- A Patent Pending Shuttle System controlled by Servo Motor ensures Perfect Registration
- Full Laser Guarding & Photo Sensor at all Trap Points ensuring the Operator Safety



Chase

- Chase Turn-Over for Easy Order Change



Order Change

- Possible to prepare Next Order
- Easy to change Cutting Die



Chase Locking System

- Multiple Hydraulic Clamps secure the Chase in Place to keep Perfect Registration



Control Panel

- Possible to control all Functions



Touch Screen

- Computerized Control System & Touch Screen can immediately trace and show Machine Status Error Messages



Wook IL Machinery Co., Ltd



WISIS Machinery Co., Ltd